

SCF

CONTAINER SOLUTIONS

SCF

131 132

SCFU 320156 7
2502

**HIRE
OR BUY**

CAUTION
9-6
HIGH

**20FT SIDE
OPENING SHIPPING
CONTAINER**

20ft Side Opening Shipping Container

SCF's 20ft Single Side Opening shipping container is one of the most flexible storage containers available. By providing dual access points through the end doors or side doors, goods can easily be accessed with the ability to open doors for a whole or half side.

Key Features

- Dual access - Full single side opening access and end door access
- Wind and watertight
- Secure and lockable
- Forklift pockets and corner castings for easy transport and restraint
- Wooden floors
- Approx 6.1m L x 2.5m H x 2.6m H (GP) or 2.9m H (HC)

Options

- Electrical fitout (power and lighting)
- Shelving
- Variety of Container Grades available - New or Used
- Additional custom container modifications available

Details

Built with high-quality materials, SCF's 20ft Single Side Opening container provides the ultimate flexibility when accessing goods.

This container is suited to users who like to regularly access their goods. Unlike traditional end door containers, the whole side or half of the side can be opened for easy access. Storage of bulky or large items benefit from the side door easy access of this container.

SCF also produces a range of other sizes and variants to provide alternative capacity options to suit your requirements.

Specifications

20ft Side Opening Shipping Container - GP | SSD28

Specifications may vary

Internal		External	
Length (mm)	5,898	Length (mm)	6,058
Width (mm)	2,287	Width (mm)	2,438
Height (mm)	2,302	Height (mm)	2,591

Weight

Tare (kg)	3,200
Payload (kg)	20,800
MGW (kg)	24,000

20ft Side Opening Shipping Container - High Cube | SSD29

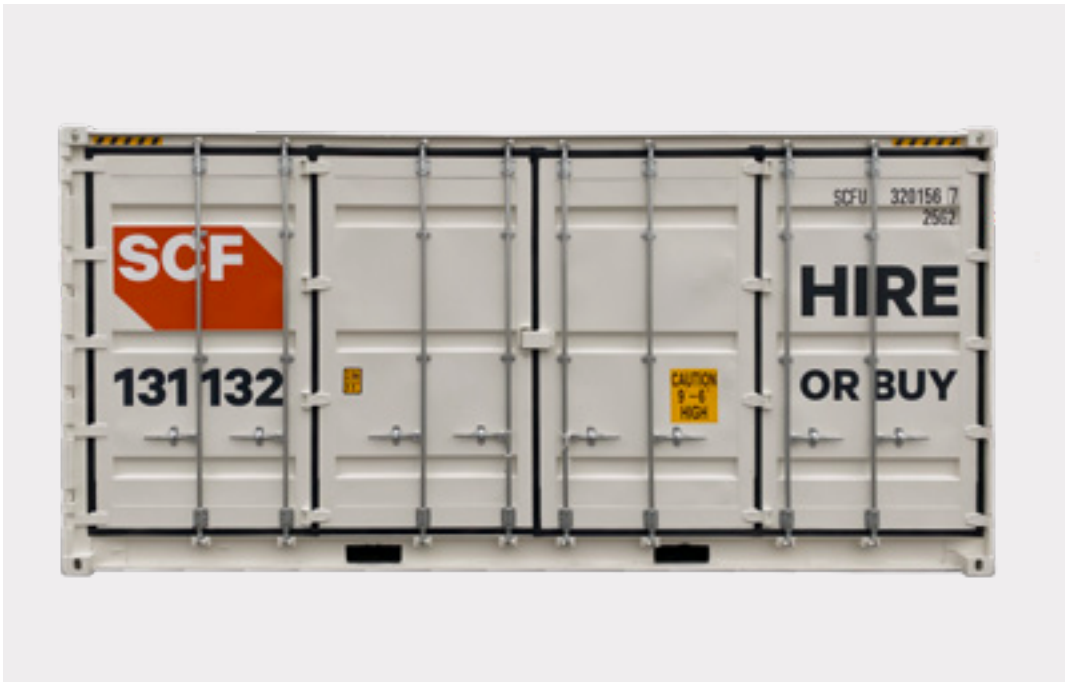
Specifications may vary

Internal		External	
Length (mm)	5,898	Length (mm)	6,058
Width (mm)	2,287	Width (mm)	2,438
Height (mm)	2,607	Height (mm)	2,896

Weight

Tare (kg)	3,300
Payload (kg)	27,180
MGW (kg)	30,480

Top:
20ft Side
Opening
containers
provide easier
access to all
your goods.



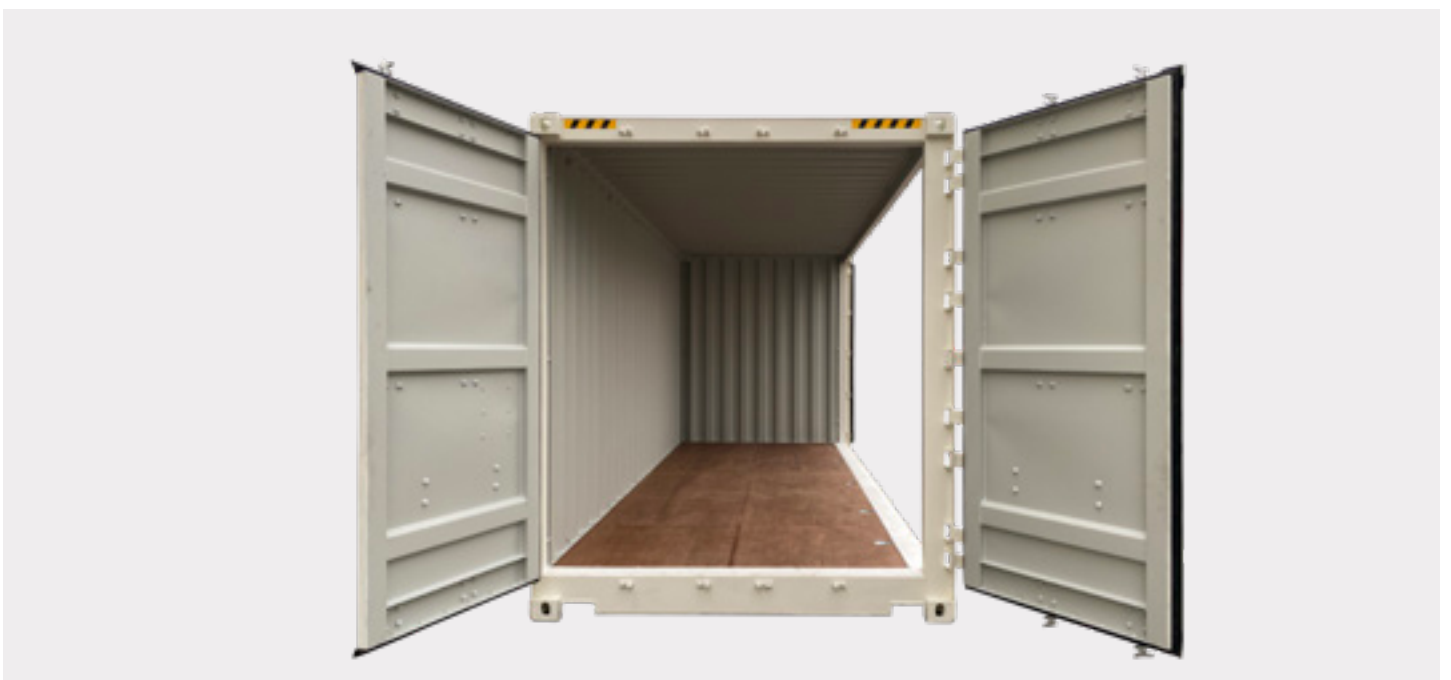
Middle Left:
20ft Side Opening
Containers are
similar dimensions
to the standard
20ft container.



Middle Right:
Just like the 20ft
container, Side
Openings are wind,
weather and
vermin proof..



Below:
Single Side
Opening increases
ease of access,
but keeps costs
down with a
standard
corrugated rear
wall.





SCF
131 132

SCFU 320156 7
2562
HIRE
OR BUY

CAUTION
9-6
HIGH